

NO DIMENSIONS TO BE SCALED FROM THIS DRAWING

- KEY:
- Proposed
 - Cutback Envelope
 - 119-121 Cannon Street

SOURCE DATA:
 Existing and surrounding buildings:
 Zmapping - 3D context model
 King William St_141011.dwg
 Ptozman Craven
 2D Survey, drwg no's:
 25683-001E-10B to 25683-001E-12B,
 25683-001E-12A, 25683-001E-18A,
 25683-001E-20A to 25683-001E-24A

Proposed Scheme:
 Weston Williamson
 3D Model received 06.10.2021
 Bank with top floors _ DWG export.dwg

NOTES:
 Maintaining the light to at least 50%
 (or within 2% if already below) to all
 neighbouring properties



Rev	Description	Drawn	Date

dpr

London 020 7936 3668 Bristol 0117 450 9703
 Liverpool 0151 242 0980 Dublin +353 1 575 8844
 www.dpr.uk.com info@dpr.uk.com

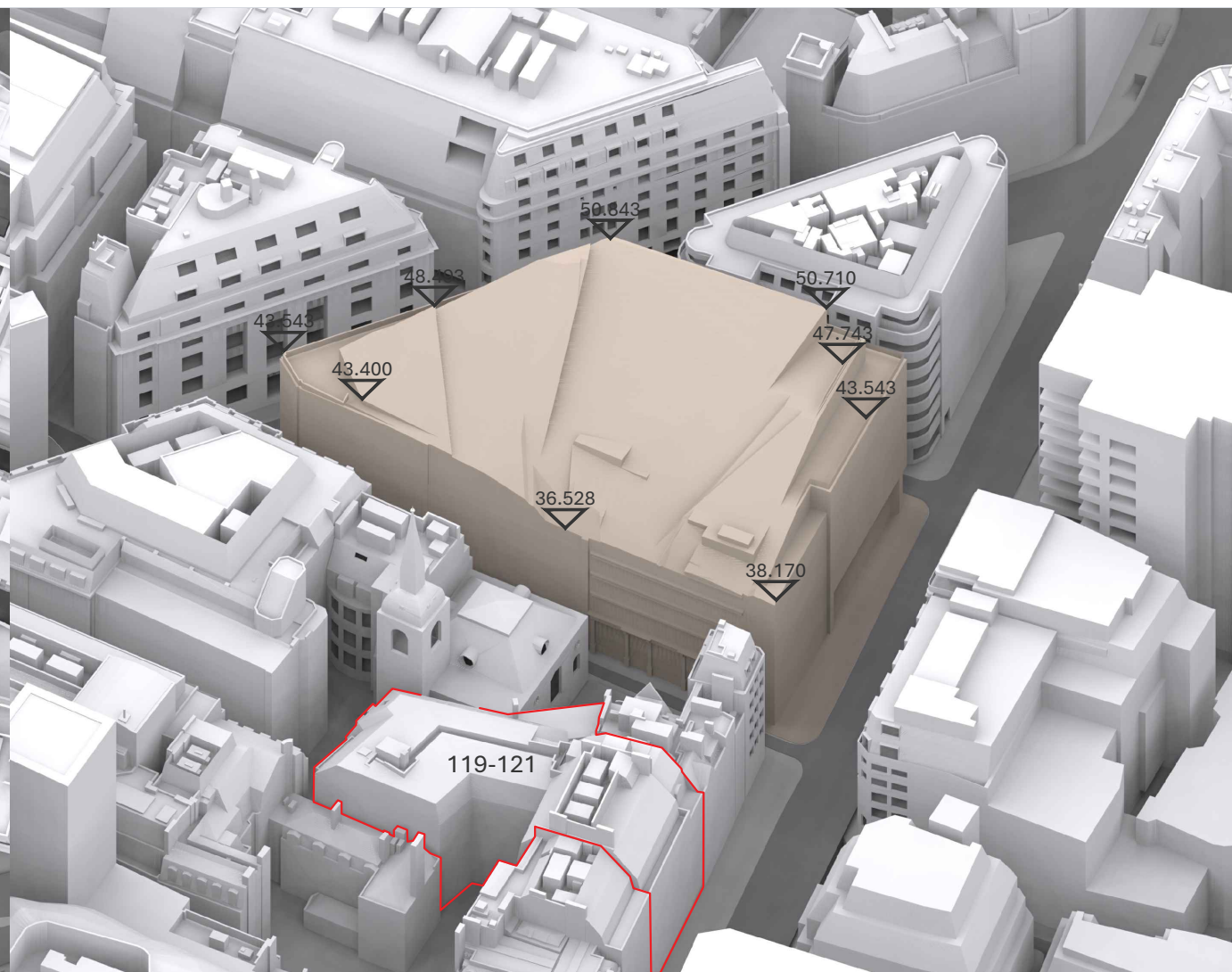
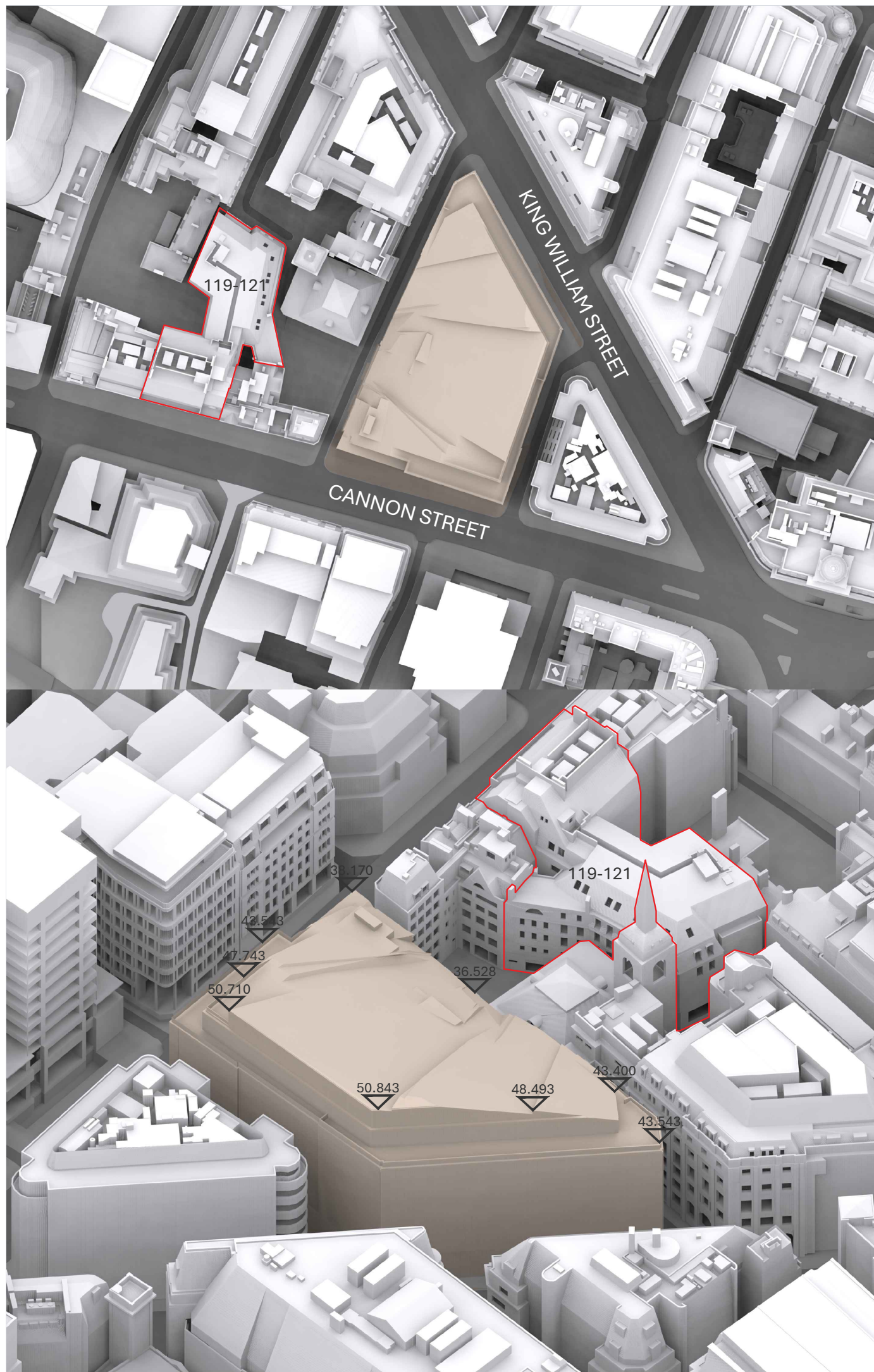
TITLE:
BANK OSD
 LONDON
 EC4N 7TW

DRAWING:
 RIGHTS OF LIGHT CUTBACK
 Plan and 3D Views
 119-212 Cannon Street

DRAWN: KB	JOB NBR:
SCALE: NTS	21575
DATE: 11.11.2024	
DWG NO:	REV:
S03-A15-RCB-001	

Appendix 5 - Cutback Analysis

Plan View



NO DIMENSIONS TO BE SCALED FROM THIS DRAWING

KEY:
 Proposed
 119-121 Cannon Street

SOURCE DATA:
 Existing and surrounding buildings:
 Zmapping - 3D context model
 King William St_141011.dwg
 Ptowman Craven
 2D Survey, drwg no's:
 25683-001E-10B to 25683-001E-12B,
 25683-001E-12A, 25683-001E-18A,
 25683-001E-20A to 25683-001E-24A

Proposed Scheme:
 Weston Williamson
 3D Model received 06.10.2021
 Bank with top floors _ DWG export.dwg

NOTES:
 Maintaining the light to at least 50%
 (or within 2% if already below) to all
 neighbouring properties



Rev	Description	Drawn	Date

dpr

London 020 7936 3668 Bristol 0117 450 9703
 Liverpool 0151 242 0980 Dublin +353 1 575 8844
 www.dpr.uk.com info@dpr.uk.com

TITLE:
BANK OSD
 LONDON
 EC4N 7TW

DRAWING:
 RIGHTS OF LIGHT CUTBACK
 Plan and 3D Views
 119-212 Cannon Street

DRAWN: KB	JOB NBR:
SCALE: NTS	21575
DATE: 11.11.2024	
DWG NO:	REV:
S03-A15-RCB-002	

NO DIMENSIONS TO BE SCALED FROM THIS DRAWING

KEY:

- Proposed
- Cutback Area

SOURCE DATA:

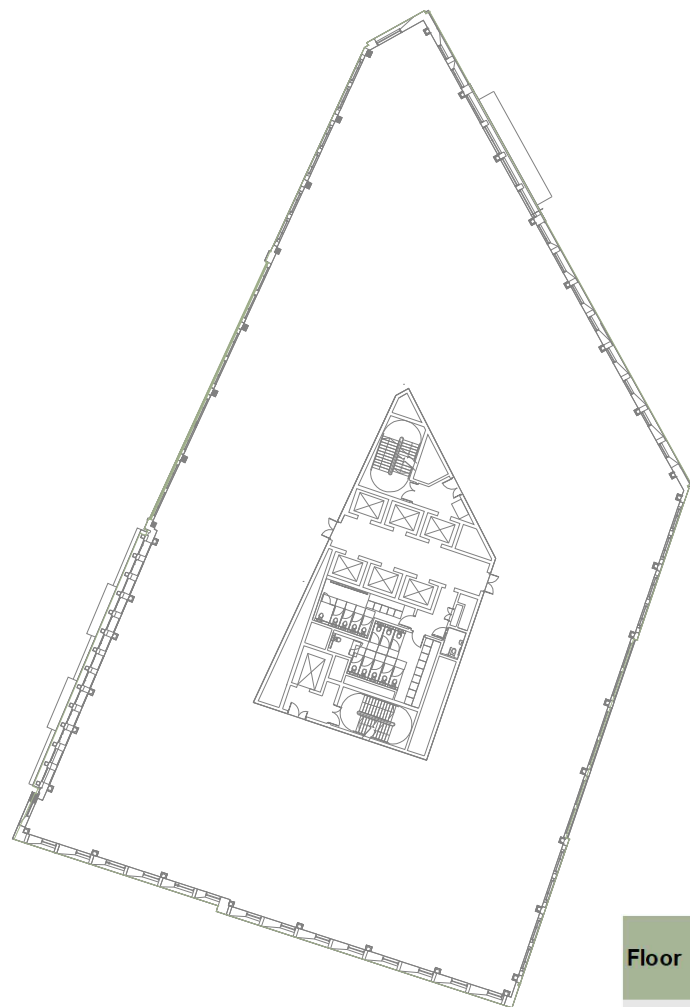
Existing and surrounding buildings:
 Zmapping - 3D context model
 King William St_141011.dwg
 Ploverman Craven
 2D Survey, drwg no's:
 25683-001E-10B to 25683-001E-12B,
 25683-001E-12A, 25683-001E-18A,
 25683-001E-20A to 25683-001E-24A

Proposed Scheme:
 Weston Williamson
 3D Model received 06.10.2021
 Bank with top floors _ DWG export.dwg

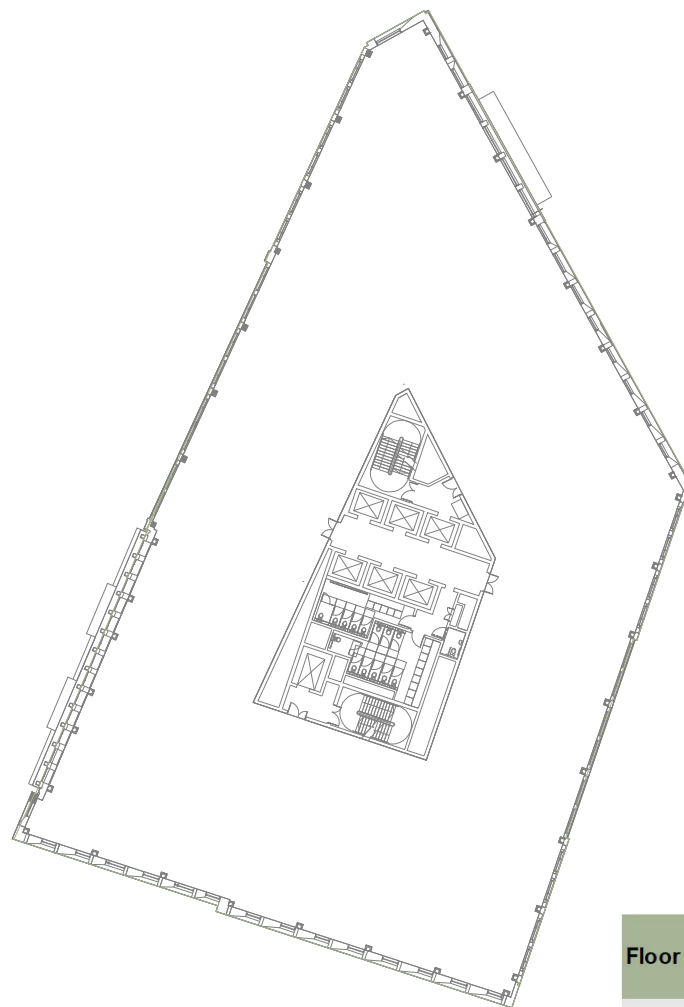
NOTES:

Floor areas taken at 2.2m above FFL

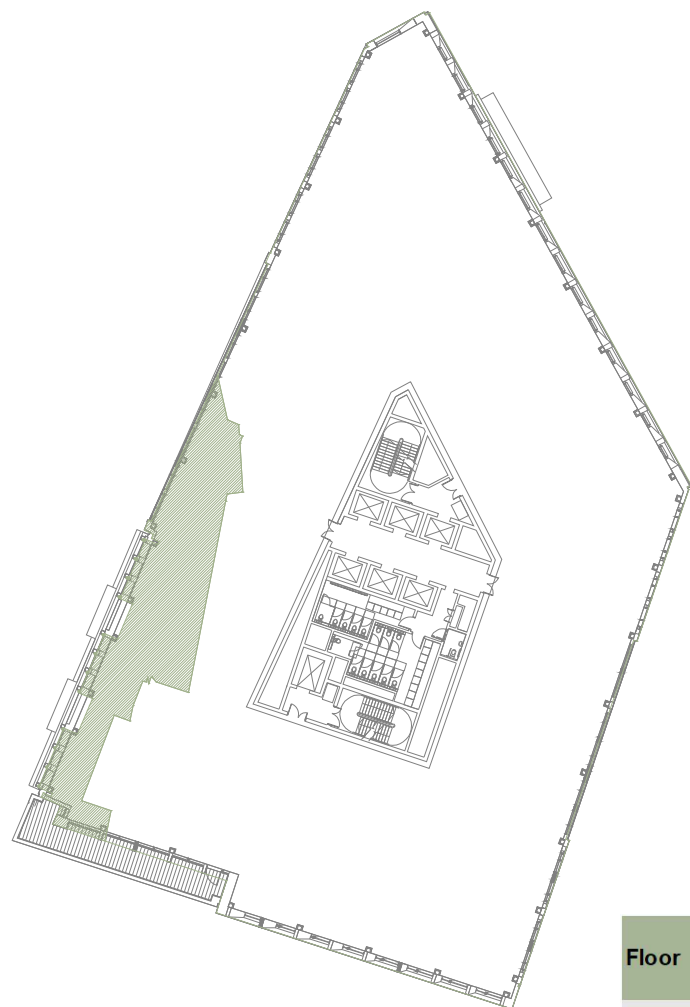
Maintaining the light to at least 50%
 (or within 2% if already below) to all
 neighbouring properties



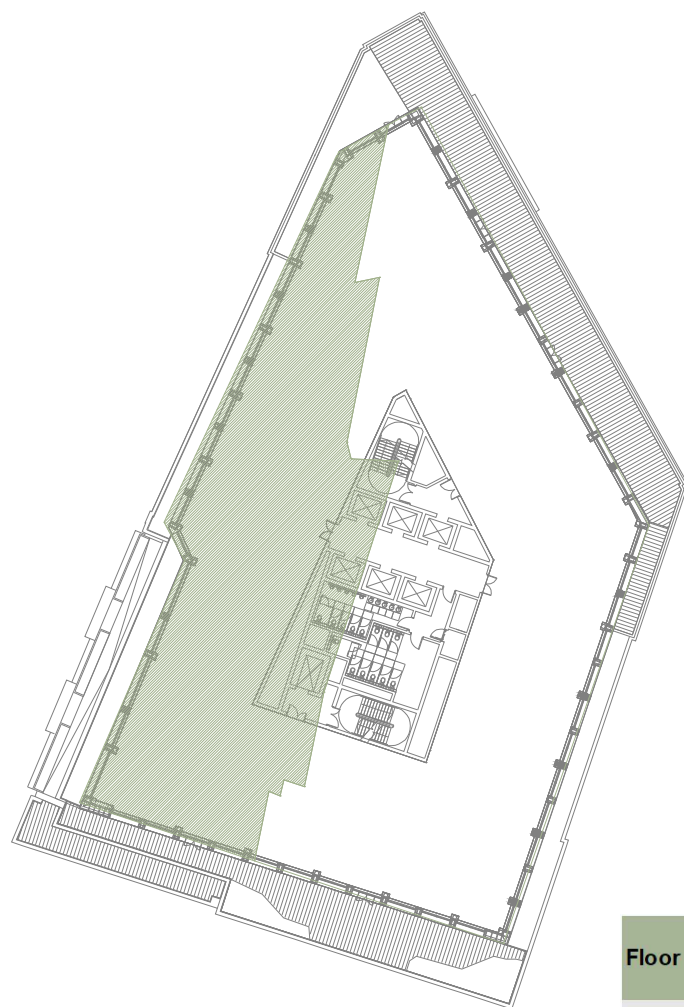
Floor	Total GEA (sq m)	Cutback Area (sq m)	Retained GEA (sq m)
F03	2565.5	0.0	2565.5



Floor	Total GEA (sq m)	Cutback Area (sq m)	Retained GEA (sq m)
F04	2553.2	0.2	2553.0



Floor	Total GEA (sq m)	Cutback Area (sq m)	Retained GEA (sq m)
F05	2499.9	189.2	2310.7



Floor	Total GEA (sq m)	Cutback Area (sq m)	Retained GEA (sq m)
F06	1886.8	717.6	1169.2



Rev	Description	Drawn	Date

dpr

London 020 7936 3668 Bristol 0117 450 9703
 Liverpool 0151 242 0980 Dublin +353 1 575 8844
 www.dpr.uk.com info@dpr.uk.com

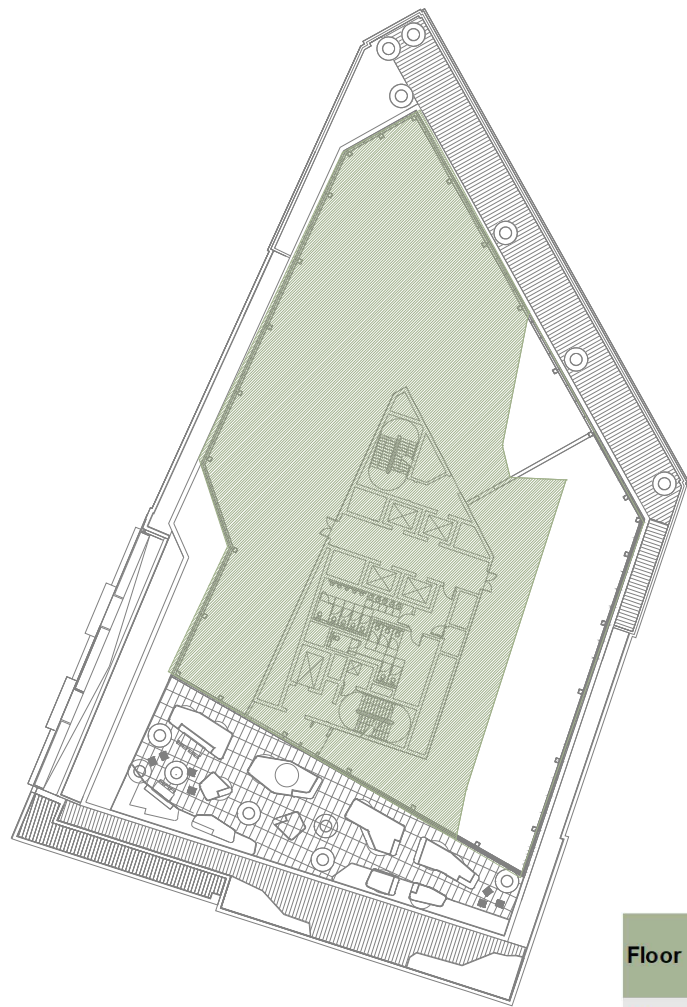
TITLE:

BANK OSD
 LONDON
 EC4N 7TW

DRAWING:

RIGHTS OF LIGHT CUTBACK
 Plan and 3D Views
 119-212 Cannon Street

DRAWN: KB	JOB NBR:
SCALE: NTS	21575
DATE: 11.11.2024	
DWG NO:	REV:
S03-A15-RCB-004	



Floor	Total GEA (sq m)	Cutback Area (sq m)	Retained GEA (sq m)
F07	1458.2	1167.2	290.9

NO DIMENSIONS TO BE SCALED FROM THIS DRAWING

KEY:

- Proposed
- Cutback Area

SOURCE DATA:

Existing and surrounding buildings:
 Zmapping - 3D context model
 King William St_141011.dwg
 Ptozman Craven
 2D Survey, drwg no's:
 25683-001E-10B to 25683-001E-12B,
 25683-001E-12A, 25683-001E-18A,
 25683-001E-20A to 25683-001E-24A

Proposed Scheme:
 Weston Williamson
 3D Model received 06.10.2021
 Bank with top floors _ DWG export.dwg

NOTES:

Floor areas taken at 2.2m above FFL

Maintaining the light to at least 50%
 (or within 2% if already below) to all
 neighbouring properties



Rev	Description	Drawn	Date



London 020 7936 3668 Bristol 0117 450 9703
 Liverpool 0151 242 0980 Dublin +353 1 575 8844
 www.dpr.uk.com info@dpr.uk.com

TITLE:

BANK OSD
 LONDON
 EC4N 7TW

DRAWING:

RIGHTS OF LIGHT CUTBACK
 Plan and 3D Views
 119-212 Cannon Street

DRAWN: KB	JOB NBR:
SCALE: NTS	21575
DATE: 11.11.2024	

DWG NO: **S03-A15-RCB-005** REV: